

Nomenclature

Model Names

AC	160	J	X	M	D	E	H	/	AF
(1)	(2)	(3)	(4)	(5)	(6)	(7)	(8)		Buyer

(1) Classification

AC	SINGLE
AM	VRF

(2) Capacity

x 1/10 kW (3 digits)

(3) Version

F	2013
H	2014
J	2015

(4) Product Type

N	Indoor Unit
X	Outdoor Unit

(5) Product Notation

1	1Way Cassette
2	2Way Cassette
N	4Way Cassette S (600 x 600)
4	4Way Cassette S
L	LSP Duct (Slim Duct)
M	MSP Duct
H	HSP Duct
C	Ceiling
T	Neo Forte
E	OAP Duct

(6) Feature

D	DELUXE
F	FLAGSHIP
P	Premium
G(EHS)	Cascade (EEV)

(7) Rating Voltage

C	1Ø, 208~230V, 60Hz
E	1Ø, 220~240V, 50Hz
G	3Ø, 380~415V, 50Hz
K	1Ø, 220~240V, 50/60Hz
N	3Ø, 380~415V, 50/60Hz

(8) Mode

C	Cooling Only(R410A)
H	Heat Pump(R410A)
D	Cooling Only(R22)
E	Heat Pump(R22)

2 Specifications

Duct S

Type				Duct S	Duct S	Duct S	
Model Name	Indoor Unit			AC035JNMDEH/AF	AC052JNMDEH/AF	AC071JNMDEH/AF	
	Outdoor Unit			AC035JXMDEH/AF	AC052JXMDEH/AF	AC071JXMDEH/AF	
System	Mode			-	Heat Pump	Heat Pump	
	Capacity	Cooling(Min/Std/Max)		kW	0.98 / 3.50 / 4.10	1.46 / 4.98 / 5.27	1.84 / 7.18 / 7.62
				Btu/h	3,300 / 12,000 / 14,000	5,000 / 17,000 / 18,000	6,300 / 24,500 / 26,000
		Heating(Min/Std/Max)		kW	0.99 / 3.98 / 4.98	0.73 / 4.98 / 6.45	1.67 / 7.18 / 8.00
				Btu/h	3,400 / 13,600 / 17,000	2,500 / 17,000 / 22,000	5,700 / 24,500 / 27,300
	Power	Power Input (Nominal)	Cooling(Min/Std/Max)	kW	0.33 / 1.15 / 1.35	0.35 / 1.60 / 1.70	0.47 / 2.50 / 3.23
			Heating(Min/Std/Max)		0.24 / 1.18 / 1.50	0.25 / 1.23 / 2.20	0.31 / 1.95 / 2.90
		Current Input (Nominal)	Cooling(Min/Std/Max)	A	2.10 / 5.30 / 6.20	2.20 / 7.30 / 8.00	2.80 / 11.60 / 14.10
			Heating(Min/Std/Max)		1.60 / 5.40 / 6.80	1.60 / 5.60 / 9.00	1.90 / 8.70 / 12.60
		MCA		A	10.00	12.70	22.70
		MFA		A	11.00	13.97	25.00
	Energy Efficiency	EER (Nominal Cooling)		(Btu/h)/W	10.43	10.63	9.80
		COP (Nominal Heating)		(Btu/h)/W	11.52	13.82	12.56
		Energy Grade			-	-	-
	Piping Connections	Liquid Pipe		Ø, mm	6.35	6.35	6.35
				Ø, inch	1/4"	1/4"	1/4"
		Gas Pipe		Ø, mm	9.52	12.70	15.88
				Ø, inch	3/8"	1/2"	5/8"
		Installation Limitation	Max. Length	m	20	30	30
			Max. Height	m	15	15	15
Field Wiring	Power Source Wire		Ø, mm	2.50	2.50	2.50	
	Transmission Cable		Ø, mm	0.75 ~ 1.25	0.75 ~ 1.25	0.75 ~ 1.25	
Refrigerant	Type			R410A	R410A	R410A	
	Control Method			-	-	-	
	Factory Charging		kg	0.90	1.00	1.30	
Indoor Unit	Power Supply			Ø, #, V, Hz	1,2,220-240,50	1,2,220-240,50	
	Fan	Type		-	Sirocco Fan(BLDC)	Sirocco Fan(BLDC)	
		Motor	Output	W	153 x 1	153 x 1	
		Air Flow Rate	High/Mid/Low	CMM	9.20 / 7.40 / 5.80	18.70 / 16.50 / 14.00	23.00 / 20.00 / 17.00
				l/s	153.33 / 123.33 / 96.67	311.67 / 275.00 / 233.33	383.33 / 333.33 / 283.33
	External Static Pressure	Min/Std/Max		mmAq	0.0 / 2.5 / 4.0	0.0 / 3.0 / 15.0	0.0 / 3.0 / 15.0
				Pa	0.0 / 24.5 / 39.2	0.0 / 29.4 / 147.0	0.0 / 29.4 / 147.0
	Drain	Drain Pipe		Ø,mm	VP25 (OD 32,ID 25)	VP25 (OD 32,ID 25)	VP25 (OD 32,ID 25)
		Pressure	High/Mid/Low		32 / 29 / 26	33 / 30 / 27	36 / 32 / 28
	Sound	Power	Cooling		-	-	-
					-	-	-
	External Dimension	Net Weight		kg	20.00	25.20	25.20
		Shipping Weight		kg	24.00	29.00	29.00
		Net Dimensions (WxHxD)		mm	700 x 199 x 600	850 x 250 x 700	850 x 250 x 700
		Shipping Dimensions (WxHxD)		mm	951 x 280 x 709	1,064 x 320 x 784	1,064 x 320 x 784
	Panel Size	Panel model			-	-	-
		Panel Net Weight		kg	-	-	-
		Shipping Weight		kg	-	-	-
		Net Dimensions (WxHxD)		mm	-	-	-
	Additional Accessories	Shipping Dimensions (WxHxD)		mm	-	-	-
Drain pump		Drain pump		MDP-G075SP	MDP-G075SP	MDP-G075SP	
		Max. Lifting	mm/liter/h	-	-	-	
Air Filter			-	-	-		
Outdoor Unit	Power Supply			Ø, #, V, Hz	1,2,220-240,50	1,2,220-240,50	
	Compressor	Type		-	BLDC Rotary	BLDC Rotary	
		Model			UG9A090FUAER	UG4T150LNBEQ	UG4T200FUAEE4
		Output		kW	0.84	1.42	1.79
	Oil	Type		-	POE	POE	
					POE	POE	
	Fan	Air Flow Rate	Cooling	CMM	37.00	40.00	41.00
				l/s	616.67	666.67	683.33
	Sound	Pressure	Cooling/Heating		47 / 48	47 / 48	49 / 51
		Power	Cooling		-	-	-
	External Dimension	Net Weight		kg	29.50	36.00	45.00
		Shipping Weight		kg	32.00	39.00	48.00
		Net Dimensions (WxHxD)		mm	720 x 548 x 265	790 x 548 x 285	880 x 638 x 310
		Shipping Dimensions (WxHxD)		mm	844 x 622 x 353	913 x 622 x 371	1,023 x 730 x 413
	Operating Temp. Range	Cooling		°C	-5.0 ~ 48.0	-5.0 ~ 48.0	-5.0 ~ 48.0
		Heating		°C	-15.0 ~ 24.0	-15.0 ~ 24.0	-15.0 ~ 24.0

* Specifications may be subject to change without prior notice.

1) Nominal cooling capacities are based on;

Indoor temperature : 27°C DB, 19°C WB / Outdoor temperature : 35°C DB, Refrigerant piping : 5m , Level differences : 0m

2) Nominal heating capacities are based on;

Indoor temperature : 20°C DB, 15°C WB / Outdoor temperature : 7°C DB, 6°C WB, Refrigerant piping : 5m, Level differences : 0m

3) Sound Pressure level is acquired in an anechoic room. Thus actual noise level may be different depending on the installation conditions.

2 Specifications

Duct S

Type				Duct S	Duct S	Duct S	
Model Name	Indoor Unit			AC090JNMDEH/AF	AC100JNMDEH/AF	AC100JNMDEH/AF	
	Outdoor Unit			AC090JXMDEH/AF	AC100JXMDGH/AF	AC100JXMDEH/AF	
System	Mode			-	Heat Pump	Heat Pump	
	Capacity	Cooling(Min/Std/Max)		kW	2.93 / 8.79 / 9.96	3.02 / 10.26 / 10.84	3.02 / 10.26 / 10.84
				Btu/h	10,000 / 30,000 / 34,000	10,300 / 35,000 / 37,000	10,300 / 35,000 / 37,000
		Heating(Min/Std/Max)		kW	1.29 / 9.23 / 10.26	2.17 / 10.26 / 11.58	2.17 / 10.26 / 11.58
				Btu/h	4,400 / 31,500 / 35,000	7,400 / 35,000 / 39,500	7,400 / 35,000 / 39,500
	Power	Power Input (Nominal)	Cooling(Min/Std/Max)	kW	0.90 / 3.37 / 4.60	0.80 / 3.85 / 4.90	0.80 / 3.90 / 4.90
			Heating(Min/Std/Max)	kW	0.65 / 2.80 / 4.20	0.50 / 2.90 / 4.43	0.50 / 3.20 / 4.43
		Current Input (Nominal)	Cooling(Min/Std/Max)	A	4.70 / 15.00 / 20.00	2.50 / 6.10 / 9.70	4.40 / 18.50 / 21.50
			Heating(Min/Std/Max)	A	3.70 / 12.50 / 18.00	1.60 / 4.70 / 8.00	3.00 / 14.00 / 20.00
		MCA		A	24.70	14.70	24.70
		MFA		A	27.50	16.20	27.50
	Energy Efficiency	EER (Nominal Cooling)		(Btu/h)/W	8.90	9.10	8.97
		COP (Nominal Heating)		(Btu/h)/W	11.25	12.07	10.94
		Energy Grade		-	-	-	-
	Piping Connections	Liquid Pipe		Ø, mm	9.52	9.52	9.52
				Ø, inch	3/8"	3/8"	3/8"
		Gas Pipe		Ø, mm	15.88	15.88	15.88
				Ø, inch	5/8"	5/8"	5/8"
		Installation Limitation	Max. Length	m	50	50	50
			Max. Height	m	30	30	30
Field Wiring	Power Source Wire		Ø, mm	-	-	-	
	Transmission Cable		Ø, mm	-	-	-	
Refrigerant	Type		-	R410A	R410A	R410A	
	Control Method		-	-	-	-	
	Factory Charging		kg	2.50	2.50	2.50	
Indoor Unit	Power Supply			Ø, #, V, Hz	1,2,220-240,50	1,2,220-240,50	
	Fan	Type		-	Sirocco	Sirocco	
		Motor	Output	W	153 x 1	153 x 1	
		Air Flow Rate	High/Mid/Low	CMM	29.0 / 25.0 / 22.0	33.0 / 27.0 / 22.0	
		External Static Pressure	Min/Std/Max	mmAq	0.0 / 4.0 / 15.0	0.0 / 4.0 / 15.0	
	Drain	Drain Pipe		Ø,mm	VP25 (OD 32,ID 25)	VP25 (OD 32,ID 25)	
		Pressure	High/Mid/Low	Pa	41 / 38 / 34	39 / 36 / 33	
	Sound	Power	Cooling	dB(A)	-	-	
		Net Weight		kg	25.00	32.00	
	External Dimension	Shipping Weight		kg	29.00	37.00	
		Net Dimensions (WxHxD)		mm	850 x 250 x 700	1,200 x 250 x 700	
		Shipping Dimensions (WxHxD)		mm	1,064 x 320 x 784	1,429 x 320 x 779	
		Panel model		-	-	-	
	Panel Size	Panel Net Weight		kg	-	-	
		Shipping Weight		kg	-	-	
		Net Dimensions (WxHxD)		mm	-	-	
		Shipping Dimensions (WxHxD)		mm	-	-	
	Additional Accessories	Drain pump	Drain pump	mm/liter/h	MDP-G075SP	MDP-G075SP	
		Air Filter	Max. Lifting	-	-	-	
	Outdoor Unit	Power Supply			Ø, #, V, Hz	1,2,220-240,50	3,4,380-415,50
Compressor		Type		-	Twin BLDC Rotary	Twin BLDC Rotary	
		Model		-	UG8T300LNBJU	UG8T300FUCJU	
		Output		kW	2.82	2.82	
Fan		Oil	Type	-	PVE	PVE	
			Air Flow Rate	Cooling	CMM	60.00	60.00
Sound		Pressure	Cooling/Heating	dB(A)	54 / 56	55 / 57	
		Power	Cooling	dB(A)	-	-	
External Dimension		Net Weight		kg	67.00	69.50	
		Shipping Weight		kg	72.00	74.50	
		Net Dimensions (WxHxD)		mm	880 x 967 x 320	880 x 967 x 320	
		Shipping Dimensions (WxHxD)		mm	1,047 x 1,045 x 415	1,047 x 1,045 x 415	
Operating Temp. Range		Cooling		°C	-5.0 ~ 48.0	-5.0 ~ 48.0	
		Heating		°C	-15.0 ~ 24.0	-15.0 ~ 24.0	

* Specifications may be subject to change without prior notice.

1) Nominal cooling capacities are based on;

Indoor temperature : 27°C DB, 19°C WB / Outdoor temperature : 35°C DB, Refrigerant piping : 5m , Level differences : 0m

2) Nominal heating capacities are based on;

Indoor temperature : 20°C DB, 15°C WB / Outdoor temperature : 7°C DB, 6°C WB, Refrigerant piping : 5m, Level differences : 0m

3) Sound pressure level is acquired in an anechoic room. Thus actual noise level may be different depending on the installation conditions.

2 Specifications

Duct S

Type				Duct S	Duct S	Duct S	
Model Name	Indoor Unit			AC120JNMDEH/AF	AC140JNMDEH/AF	AC160JNMDEH/AF	
	Outdoor Unit			AC120JXMDGH/AF	AC140JXMDGH/AF	AC160JXMDGH/AF	
System	Mode			-	Heat Pump	Heat Pump	
	Capacity	Cooling(Min/Std/Max)		kW	2.93 / 12.31 / 12.46	3.19 / 13.77 / 13.92	3.22 / 15.83 / 16.12
				Btu/h	10,000 / 42,000 / 42,500	10,900 / 47,000 / 47,500	11,000 / 54,000 / 55,000
		Heating(Min/Std/Max)		kW	3.81 / 13.48 / 16.41	3.52 / 14.07 / 18.46	2.34 / 15.83 / 19.34
				Btu/h	13,000 / 46,000 / 56,000	12,000 / 48,000 / 63,000	8,000 / 54,000 / 66,000
	Power	Power Input (Nominal)	Cooling(Min/Std/Max)	kW	1.05 / 4.74 / 5.90	1.30 / 5.30 / 6.50	1.08 / 6.07 / 6.35
			Heating(Min/Std/Max)	kW	0.88 / 4.40 / 7.30	0.90 / 4.62 / 7.50	0.88 / 5.16 / 6.94
		Current Input (Nominal)	Cooling(Min/Std/Max)	A	2.10 / 8.00 / 9.20	2.50 / 9.00 / 10.00	2.20 / 9.70 / 10.00
			Heating(Min/Std/Max)	A	1.80 / 7.00 / 12.00	2.00 / 7.20 / 12.20	1.80 / 8.00 / 12.70
		MCA		A	14.70	14.70	15.50
		MFA		A	16.20	16.20	17.10
	Energy Efficiency	EER (Nominal Cooling)		(Btu/h)/W	8.86	8.87	8.90
		COP (Nominal Heating)		(Btu/h)/W	10.45	10.39	10.47
		Energy Grade		-	-	-	-
	Piping Connections	Liquid Pipe		Ø, mm	9.52	9.52	9.52
				Ø, inch	3/8"	3/8"	3/8"
		Gas Pipe		Ø, mm	15.88	15.88	19.05
				Ø, inch	5/8"	5/8"	3/4"
		Installation Limitation	Max. Length	m	50	50	50
			Max. Height	m	30	30	30
Field Wiring	Power Source Wire		Ø, mm	2.50	2.50	2.50	
	Transmission Cable		Ø, mm	0.75 ~ 1.25	0.75 ~ 1.25	0.75 ~ 1.25	
Refrigerant	Type		-	R410A	R410A	R410A	
	Control Method		-	-	-	-	
	Factory Charging		kg	2.20	2.20	3.50	
Indoor Unit	Power Supply			Ø, #, V, Hz	1,2,220-240,50	1,2,220-240,50	
	Fan	Type		-	Sirocco Fan	Sirocco Fan	
		Motor	Output	W	153 x 1	153 x 1	244 x 1
		Air Flow Rate	High/Mid/Low	CMM	38.0 / 32.0 / 25.0	42.0 / 34.0 / 27.0	49.00 / 43.00 / 37.00
		External Static Pressure	Min/Std/Max	mmAq	0.0 / 5.2 / 15.0	0.0 / 5.2 / 15.0	0.0 / 5.2 / 15.0
	Drain	Pressure		Pa	0.0 / 50.96 / 147.0	0.0 / 50.96 / 147.0	0.0 / 50.96 / 147.0
		Drain Pipe		Ø,mm	VP25 (OD 32, ID 25)	VP25 (OD 32, ID 25)	VP25 (OD 32, ID 25)
	Sound	Pressure	High/Mid/Low	dB(A)	42 / 38 / 34	43 / 39 / 34	44 / 40 / 35
		Power	Cooling	-	-	-	
	External Dimension	Net Weight		kg	32.50	32.50	38.00
		Shipping Weight		kg	37.00	37.00	42.00
		Net Dimensions (WxHxD)		mm	1,200 x 250 x 700	1,200 x 250 x 700	1,300 x 300 x 700
		Shipping Dimensions (WxHxD)		mm	1,429 x 320 x 779	1,429 x 320 x 779	1,529 x 370 x 779
	Panel Size	Panel model		-	-	-	-
		Panel Net Weight		kg	-	-	-
		Shipping Weight		kg	-	-	-
		Net Dimensions (WxHxD)		mm	-	-	-
	Additional Accessories	Shipping Dimensions (WxHxD)		mm	-	-	-
		Drain pump	Drain pump	-	MDP-G075SP	MDP-G075SP	MDP-G075SP
			Max. Lifting	mm/liter/h	-	-	-
Air Filter		-	-	-	-		
Outdoor Unit	Power Supply			Ø, #, V, Hz	3,4,380-415,50	3,4,380-415,50	
	Compressor	Type		-	Twin BLDC Rotary	Twin BLDC Rotary	
		Model		-	UG5T450FUFJX	UG5T450FUFJX	
		Output		kW	4.12	4.12	4.12
		Oil	Type	-	PVE	PVE	
	Fan	Air Flow Rate	Cooling	CMM	70.00	70.00	70.00
		Pressure	Cooling/Heating	l/s	1,166.67	1,166.67	1,166.67
	Sound	Power	Cooling	dB(A)	57 / 58	57 / 59	57 / 59
		Net Weight		kg	89.00	89.00	97.00
	External Dimension	Shipping Weight		kg	99.00	99.00	107.00
		Net Dimensions (WxHxD)		mm	932 x 1,162 x 375	932 x 1,162 x 375	932 x 1,162 x 375
		Shipping Dimensions (WxHxD)		mm	1,095 x 1,286 x 476	1,095 x 1,286 x 476	1,095 x 1,286 x 476
	Operating Temp. Range	Cooling		°C	-5.0 ~ 48.0	-5.0 ~ 48.0	-5.0 ~ 48.0
		Heating		°C	-15.0 ~ 24.0	-15.0 ~ 24.0	-15.0 ~ 24.0

* Specifications may be subject to change without prior notice.

1) Nominal cooling capacities are based on;

Indoor temperature : 27°C DB, 19°C WB / Outdoor temperature : 35°C DB, Refrigerant piping : 5m , Level differences : 0m

2) Nominal heating capacities are based on;

Indoor temperature : 20°C DB, 15°C WB / Outdoor temperature : 7°C DB, 6°C WB, Refrigerant piping : 5m, Level differences : 0m

3) Sound pressure level is acquired in an anechoic room. Thus actual noise level may be different depending on the installation conditions.

3 Capacity table

Duct S

AC035JNMDEH/AF + AC035JXMDEH/AF

Cooling

TC(Total Capacity), SHC(Sensible Heat Capacity), PI(Power Input)

Outdoor Temperature (°C, DB)	Indoor Temperature (°C, DB / WB)																				
	20 / 14			22 / 16			25 / 18			27 / 19			28 / 20			30 / 22			32 / 24		
	TC	SHC	PI	TC	SHC	PI	TC	SHC	PI	TC	SHC	PI	TC	SHC	PI	TC	SHC	PI	TC	SHC	PI
	MBH	MBH	kW	MBH	MBH	kW	MBH	MBH	kW	MBH	MBH	kW	MBH	MBH	kW	MBH	MBH	kW	MBH	MBH	kW
-5	13.8	11.1	0.72	14.2	11.3	0.73	14.5	11.6	0.75	14.9	11.9	0.77	15.1	12.1	0.78	15.2	12.2	0.79	15.6	12.5	0.81
21	13.4	10.7	0.82	13.7	11.0	0.84	14.1	11.2	0.86	14.4	11.5	0.89	14.6	11.7	0.90	14.8	11.8	0.91	15.1	12.1	0.93
35	11.2	8.9	1.07	11.4	9.1	1.10	11.7	9.4	1.12	12.0	9.6	1.15	12.2	9.8	1.17	12.3	9.8	1.18	12.6	10.1	1.21
46	9.6	7.7	1.35	9.8	7.9	1.38	10.1	8.1	1.41	10.3	8.3	1.45	10.5	8.4	1.47	10.6	8.5	1.48	10.8	8.7	1.52
48	8.1	6.5	1.03	8.3	6.7	1.05	8.6	6.8	1.08	8.8	7.0	1.10	8.9	7.1	1.12	9.0	7.2	1.13	9.2	7.4	1.16

Heating

TC : Total Capacity, PI: Power Input

Outdoor Temperature (°C, DB)	Indoor Temperature (°C, DB)											
	16		18		20		21		22		24	
	TC	PI	TC	PI	TC	PI	TC	PI	TC	PI	TC	PI
	MBH	kW	MBH	kW	MBH	kW	MBH	kW	MBH	kW	MBH	kW
-15	8.3	1.02	8.2	1.01	8.2	1.00	8.1	0.99	8.0	0.98	7.9	0.97
-10	10.1	1.22	10.0	1.20	9.9	1.19	9.8	1.18	9.7	1.17	9.6	1.16
0	11.8	1.14	11.7	1.13	11.6	1.12	11.4	1.11	11.3	1.10	11.2	1.09
7	13.9	1.20	13.7	1.19	13.6	1.18	13.5	1.17	13.3	1.16	13.2	1.14
24	17.2	1.23	17.0	1.22	16.9	1.20	16.7	1.19	16.5	1.18	16.4	1.17

AC052JNMDEH/AF + AC052JXMDEH/AF

Cooling

TC(Total Capacity), SHC(Sensible Heat Capacity), PI(Power Input)

Outdoor Temperature (°C, DB)	Indoor Temperature (°C, DB / WB)																				
	20 / 14			22 / 16			25 / 18			27 / 19			28 / 20			30 / 22			32 / 24		
	TC	SHC	PI	TC	SHC	PI	TC	SHC	PI	TC	SHC	PI	TC	SHC	PI	TC	SHC	PI	TC	SHC	PI
	MBH	MBH	kW	MBH	MBH	kW	MBH	MBH	kW	MBH	MBH	kW	MBH	MBH	kW	MBH	MBH	kW	MBH	MBH	kW
-5	15.1	12.1	0.81	15.5	12.4	0.83	15.9	12.7	0.85	16.3	13.0	0.87	16.6	13.2	0.88	16.7	13.3	0.89	17.1	13.7	0.91
21	16.0	12.8	0.85	16.4	13.1	0.87	16.8	13.4	0.89	17.2	13.7	0.91	17.5	14.0	0.93	17.6	14.1	0.94	18.0	14.4	0.96
35	15.8	12.6	1.49	16.2	13.0	1.52	16.6	13.3	1.56	17.0	13.6	1.60	17.3	13.8	1.63	17.4	13.9	1.64	17.8	14.3	1.68
46	12.8	10.2	1.81	13.1	10.5	1.86	13.4	10.7	1.90	13.7	11.0	1.95	14.0	11.2	1.98	14.1	11.3	2.00	14.4	11.5	2.04
48	12.2	9.8	1.87	12.5	10.0	1.92	12.8	10.3	1.96	13.2	10.5	2.01	13.4	10.7	2.04	13.5	10.8	2.06	13.8	11.0	2.11

Heating

TC : Total Capacity PI: Power Input

Outdoor Temperature (°C, DB)	Indoor Temperature (°C, DB)											
	16		18		20		21		22		24	
	TC	PI	TC	PI	TC	PI	TC	PI	TC	PI	TC	PI
	MBH	kW	MBH	kW	MBH	kW	MBH	kW	MBH	kW	MBH	kW
-15	14.4	1.67	14.3	1.65	14.1	1.64	14.0	1.62	13.8	1.60	13.7	1.59
-10	16.3	1.82	16.1	1.80	16.0	1.78	15.8	1.77	15.7	1.75	15.5	1.73
0	17.0	1.97	16.8	1.95	16.7	1.93	16.5	1.91	16.3	1.89	16.2	1.87
7	17.3	1.25	17.2	1.24	17.0	1.23	16.8	1.22	16.7	1.21	16.5	1.19
24	22.2	1.38	22.0	1.37	21.8	1.35	21.5	1.34	21.3	1.33	21.1	1.31

3 Capacity table

Duct S

AC071JNMDEH/AF + AC071JXMDEH/AF

Cooling

TC(Total Capacity), SHC(Sensible Heat Capacity), PI(Power Input)

Outdoor Temperature (°C, DB)	Indoor Temperature (°C, DB / WB)																				
	20 / 14			22 / 16			25 / 18			27 / 19			28 / 20			30 / 22			32 / 24		
	TC	SHC	PI	TC	SHC	PI	TC	SHC	PI	TC	SHC	PI	TC	SHC	PI	TC	SHC	PI	TC	SHC	PI
	MBH	MBH	kW	MBH	MBH	kW	MBH	MBH	kW	MBH	MBH	kW	MBH	MBH	kW	MBH	MBH	kW	MBH	MBH	kW
-5	28.2	22.6	1.56	28.9	23.2	1.60	29.7	23.7	1.63	30.4	24.3	1.68	30.9	24.7	1.70	31.1	24.9	1.72	31.9	25.5	1.76
21	27.3	21.9	1.79	28.0	22.4	1.83	28.7	23.0	1.88	29.4	23.5	1.93	29.9	23.9	1.96	30.1	24.1	1.97	30.8	24.7	2.02
35	22.8	18.2	2.32	23.3	18.7	2.38	23.9	19.1	2.44	24.5	19.6	2.50	24.9	19.9	2.54	25.1	20.1	2.56	25.7	20.6	2.62
46	19.6	15.7	2.93	20.1	16.1	3.00	20.6	16.5	3.07	21.1	16.9	3.15	21.4	17.1	3.20	21.6	17.3	3.23	22.1	17.7	3.30
48	16.6	13.3	2.23	17.0	13.6	2.29	17.5	14.0	2.34	17.9	14.3	2.40	18.2	14.5	2.44	18.3	14.7	2.46	18.8	15.0	2.52

Heating

TC : Total Capacity, PI: Power Input

Outdoor Temperature (°C, DB)	Indoor Temperature (°C, DB)											
	16		18		20		21		22		24	
	TC	PI	TC	PI	TC	PI	TC	PI	TC	PI	TC	PI
	MBH	kW	MBH	kW	MBH	kW	MBH	kW	MBH	kW	MBH	kW
-15	15.0	1.69	14.9	1.67	14.7	1.66	14.6	1.64	14.4	1.62	14.3	1.61
-10	18.2	2.01	18.1	1.99	17.9	1.97	17.7	1.95	17.5	1.93	17.4	1.91
0	21.2	1.89	21.0	1.87	20.8	1.85	20.6	1.83	20.4	1.82	20.2	1.80
7	25.0	1.99	24.8	1.97	24.5	1.95	24.3	1.93	24.0	1.91	23.8	1.89
24	31.0	2.03	30.7	2.01	30.4	1.99	30.1	1.97	29.8	1.95	29.5	1.93

AC090JNMDEH/AF + AC090JXMDEH/AF

Cooling

TC(Total Capacity), SHC(Sensible Heat Capacity), PI(Power Input)

Outdoor Temperature (°C, DB)	Indoor Temperature (°C, DB / WB)																				
	20 / 14			22 / 16			25 / 18			27 / 19			28 / 20			30 / 22			32 / 24		
	TC	SHC	PI	TC	SHC	PI	TC	SHC	PI	TC	SHC	PI	TC	SHC	PI	TC	SHC	PI	TC	SHC	PI
	MBH	MBH	kW	MBH	MBH	kW	MBH	MBH	kW	MBH	MBH	kW	MBH	MBH	kW	MBH	MBH	kW	MBH	MBH	kW
-5	33.5	26.8	2.16	34.3	27.4	2.21	35.1	28.1	2.26	36.0	28.8	2.32	36.6	29.3	2.36	36.9	29.5	2.38	37.8	30.2	2.43
21	31.1	24.8	2.61	31.8	25.5	2.68	32.6	26.1	2.74	33.4	26.7	2.81	33.9	27.2	2.85	34.2	27.4	2.88	35.0	28.0	2.95
35	27.9	22.3	3.13	28.6	22.9	3.21	29.3	23.4	3.29	30.0	24.0	3.37	30.5	24.4	3.42	30.7	24.6	3.45	31.5	25.2	3.53
46	19.3	15.4	2.80	19.7	15.8	2.87	20.2	16.2	2.94	20.7	16.6	3.01	21.0	16.8	3.06	21.2	17.0	3.08	21.7	17.4	3.16
48	17.7	14.1	2.74	18.1	14.5	2.81	18.5	14.8	2.88	19.0	15.2	2.95	19.3	15.4	3.00	19.5	15.6	3.02	19.9	15.9	3.09

Heating

TC : Total Capacity PI: Power Input

Outdoor Temperature (°C, DB)	Indoor Temperature (°C, DB)											
	16		18		20		21		22		24	
	TC	PI	TC	PI	TC	PI	TC	PI	TC	PI	TC	PI
	MBH	kW	MBH	kW	MBH	kW	MBH	kW	MBH	kW	MBH	kW
-15	25.5	3.96	25.3	3.92	25.0	3.88	24.8	3.84	24.5	3.80	24.3	3.76
-10	31.6	4.43	31.3	4.38	31.0	4.34	30.7	4.30	30.4	4.25	30.1	4.21
0	31.1	3.16	30.8	3.13	30.5	3.10	30.2	3.07	29.9	3.04	29.6	3.01
7	32.1	2.86	31.8	2.83	31.5	2.80	31.2	2.77	30.9	2.74	30.6	2.72
24	40.8	2.96	40.4	2.93	40.0	2.90	39.6	2.87	39.2	2.84	38.8	2.81

3 Capacity table

Duct S

AC100JNMDEH/AF + AC100JXMDGH/AF

Cooling

TC(Total Capacity), SHC(Sensible Heat Capacity), PI(Power Input)

Outdoor Temperature (°C, DB)	Indoor Temperature (°C, DB / WB)																				
	20 / 14			22 / 16			25 / 18			27 / 19			28 / 20			30 / 22			32 / 24		
	TC	SHC	PI	TC	SHC	PI	TC	SHC	PI	TC	SHC	PI	TC	SHC	PI	TC	SHC	PI	TC	SHC	PI
	MBH	MBH	kW	MBH	MBH	kW	MBH	MBH	kW	MBH	MBH	kW	MBH	MBH	kW	MBH	MBH	kW	MBH	MBH	kW
-5	39.3	31.5	2.49	40.3	32.2	2.55	41.3	33.0	2.62	42.3	33.8	2.68	43.0	34.4	2.72	43.3	34.7	2.74	44.4	35.5	2.81
21	35.8	28.6	3.00	36.7	29.3	3.08	37.6	30.1	3.15	38.5	30.8	3.23	39.1	31.3	3.28	39.4	31.5	3.31	40.4	32.3	3.39
35	32.5	26.0	3.58	33.3	26.7	3.67	34.2	27.3	3.76	35.0	28.0	3.85	35.6	28.5	3.91	35.8	28.7	3.94	36.7	29.4	4.04
46	21.9	17.6	3.21	22.5	18.0	3.29	23.0	18.4	3.37	23.6	18.9	3.45	24.0	19.2	3.51	24.2	19.3	3.53	24.8	19.8	3.62
48	20.0	16.0	3.13	20.5	16.4	3.21	21.0	16.8	3.29	21.5	17.2	3.37	21.8	17.5	3.42	22.0	17.6	3.45	22.5	18.0	3.53

Heating

TC : Total Capacity, PI: Power Input

Outdoor Temperature (°C, DB)	Indoor Temperature (°C, DB)											
	16		18		20		21		22		24	
	TC	PI	TC	PI	TC	PI	TC	PI	TC	PI	TC	PI
	MBH	kW	MBH	kW	MBH	kW	MBH	kW	MBH	kW	MBH	kW
-15	28.7	4.09	28.4	4.05	28.1	4.01	27.8	3.97	27.5	3.93	27.3	3.89
-10	35.4	4.56	35.1	4.51	34.7	4.47	34.4	4.43	34.0	4.38	33.7	4.34
0	35.0	3.26	34.6	3.23	34.3	3.20	34.0	3.17	33.6	3.14	33.3	3.10
7	35.7	2.96	35.4	2.93	35.0	2.90	34.7	2.87	34.3	2.84	34.0	2.81
24	45.8	3.06	45.4	3.03	44.9	3.00	44.5	2.97	44.0	2.94	43.6	2.91

AC100JNMDEH/AF + AC100JXMDEH/AF

Cooling

TC(Total Capacity), SHC(Sensible Heat Capacity), PI(Power Input)

Outdoor Temperature (°C, DB)	Indoor Temperature (°C, DB / WB)																				
	20 / 14			22 / 16			25 / 18			27 / 19			28 / 20			30 / 22			32 / 24		
	TC	SHC	PI	TC	SHC	PI	TC	SHC	PI	TC	SHC	PI	TC	SHC	PI	TC	SHC	PI	TC	SHC	PI
	MBH	MBH	kW	MBH	MBH	kW	MBH	MBH	kW	MBH	MBH	kW	MBH	MBH	kW	MBH	MBH	kW	MBH	MBH	kW
-5	39.3	31.5	2.49	40.3	32.2	2.55	41.3	33.0	2.62	42.3	33.8	2.68	43.0	34.4	2.72	43.3	34.7	2.74	44.4	35.5	2.81
21	35.8	28.6	3.00	36.7	29.3	3.08	37.6	30.1	3.15	38.5	30.8	3.23	39.1	31.3	3.28	39.4	31.5	3.31	40.4	32.3	3.39
35	32.5	26.0	3.63	33.3	26.7	3.72	34.2	27.3	3.81	35.0	28.0	3.90	35.6	28.5	3.96	35.8	28.7	3.99	36.7	29.4	4.09
46	21.9	17.6	3.21	22.5	18.0	3.29	23.0	18.4	3.37	23.6	18.9	3.45	24.0	19.2	3.51	24.2	19.3	3.53	24.8	19.8	3.62
48	20.0	16.0	3.13	20.5	16.4	3.21	21.0	16.8	3.29	21.5	17.2	3.37	21.8	17.5	3.42	22.0	17.6	3.45	22.5	18.0	3.53

Heating

TC : Total Capacity PI: Power Input

Outdoor Temperature (°C, DB)	Indoor Temperature (°C, DB)											
	16		18		20		21		22		24	
	TC	PI	TC	PI	TC	PI	TC	PI	TC	PI	TC	PI
	MBH	kW	MBH	kW	MBH	kW	MBH	kW	MBH	kW	MBH	kW
-15	28.7	4.53	28.4	4.48	28.1	4.44	27.8	4.40	27.5	4.35	27.3	4.31
-10	35.4	5.13	35.1	5.08	34.7	5.03	34.4	4.98	34.0	4.93	33.7	4.88
0	35.0	3.61	34.6	3.58	34.3	3.54	34.0	3.50	33.6	3.47	33.3	3.43
7	35.7	3.26	35.4	3.23	35.0	3.20	34.7	3.17	34.3	3.14	34.0	3.10
24	45.8	3.37	45.4	3.33	44.9	3.30	44.5	3.27	44.0	3.23	43.6	3.20

3 Capacity table

Duct S

AC120JNMDEH/AF + AC120JXMDGH/AF

Cooling

TC(Total Capacity), SHC(Sensible Heat Capacity), PI(Power Input)

Outdoor Temperature (°C, DB)	Indoor Temperature (°C, DB / WB)																				
	20 / 14			22 / 16			25 / 18			27 / 19			28 / 20			30 / 22			32 / 24		
	TC	SHC	PI	TC	SHC	PI	TC	SHC	PI	TC	SHC	PI	TC	SHC	PI	TC	SHC	PI	TC	SHC	PI
	MBH	MBH	kW	MBH	MBH	kW	MBH	MBH	kW	MBH	MBH	kW	MBH	MBH	kW	MBH	MBH	kW	MBH	MBH	kW
-5	37.1	29.7	2.64	38.0	30.4	2.71	38.9	31.2	2.78	39.9	31.9	2.84	40.5	32.4	2.89	40.9	32.7	2.91	41.8	33.5	2.98
21	38.3	30.6	3.75	39.2	31.4	3.84	40.2	32.1	3.93	41.2	32.9	4.03	41.8	33.5	4.09	42.2	33.7	4.13	43.2	34.5	4.22
35	39.1	31.2	4.41	40.0	32.0	4.52	41.0	32.8	4.63	42.0	33.6	4.74	42.7	34.1	4.82	43.0	34.4	4.85	44.0	35.2	4.97
46	30.9	24.7	5.07	31.6	25.3	5.19	32.4	25.9	5.32	33.2	26.5	5.45	33.7	27.0	5.54	34.0	27.2	5.58	34.8	27.8	5.72
48	28.1	22.5	4.85	28.8	23.0	4.97	29.5	23.6	5.09	30.2	24.2	5.21	30.7	24.6	5.30	31.0	24.8	5.34	31.7	25.4	5.47

Heating

TC : Total Capacity, PI: Power Input

Outdoor Temperature (°C, DB)	Indoor Temperature (°C, DB)											
	16		18		20		21		22		24	
	TC	PI	TC	PI	TC	PI	TC	PI	TC	PI	TC	PI
	MBH	kW	MBH	kW	MBH	kW	MBH	kW	MBH	kW	MBH	kW
-15	39.0	5.97	38.6	5.91	38.2	5.85	37.8	5.79	37.4	5.74	37.1	5.68
-10	44.1	6.51	43.7	6.44	43.2	6.38	42.8	6.32	42.4	6.25	42.0	6.19
0	46.0	7.05	45.5	6.98	45.1	6.91	44.6	6.84	44.2	6.77	43.7	6.70
7	46.9	4.49	46.5	4.44	46.0	4.40	45.5	4.36	45.1	4.31	44.6	4.27
24	60.1	4.94	59.5	4.89	58.9	4.84	58.3	4.79	57.7	4.74	57.1	4.70

AC140JNMDEH/AF + AC140JXMDGH/AF

Cooling

TC(Total Capacity), SHC(Sensible Heat Capacity), PI(Power Input)

Outdoor Temperature (°C, DB)	Indoor Temperature (°C, DB / WB)																				
	20 / 14			22 / 16			25 / 18			27 / 19			28 / 20			30 / 22			32 / 24		
	TC	SHC	PI	TC	SHC	PI	TC	SHC	PI	TC	SHC	PI	TC	SHC	PI	TC	SHC	PI	TC	SHC	PI
	MBH	MBH	kW	MBH	MBH	kW	MBH	MBH	kW	MBH	MBH	kW	MBH	MBH	kW	MBH	MBH	kW	MBH	MBH	kW
-5	41.5	33.2	2.96	42.5	34.0	3.03	43.6	34.9	3.10	44.7	35.7	3.18	45.4	36.3	3.23	45.7	36.6	3.26	46.8	37.5	3.33
21	42.8	34.3	4.19	43.9	35.1	4.29	45.0	36.0	4.40	46.1	36.9	4.51	46.8	37.4	4.58	47.2	37.7	4.61	48.3	38.6	4.72
35	43.7	35.0	4.93	44.8	35.8	5.05	45.9	36.7	5.17	47.0	37.6	5.30	47.8	38.2	5.38	48.1	38.5	5.43	49.3	39.4	5.56
46	34.5	27.6	5.67	35.4	28.3	5.81	36.2	29.0	5.95	37.1	29.7	6.10	37.7	30.2	6.19	38.0	30.4	6.24	38.9	31.2	6.39
48	31.5	25.2	5.42	32.2	25.8	5.55	33.0	26.4	5.69	33.8	27.1	5.83	34.4	27.5	5.92	34.7	27.7	5.97	35.5	28.4	6.11

Heating

TC : Total Capacity PI: Power Input

Outdoor Temperature (°C, DB)	Indoor Temperature (°C, DB)											
	16		18		20		21		22		24	
	TC	PI	TC	PI	TC	PI	TC	PI	TC	PI	TC	PI
	MBH	kW	MBH	kW	MBH	kW	MBH	kW	MBH	kW	MBH	kW
-15	40.6	6.27	40.2	6.21	39.8	6.14	39.4	6.08	39.1	6.02	38.7	5.96
-10	46.0	6.83	45.6	6.77	45.1	6.70	44.7	6.63	44.2	6.57	43.8	6.50
0	48.0	7.40	47.5	7.33	47.0	7.25	46.6	7.18	46.1	7.11	45.6	7.04
7	49.0	4.71	48.5	4.67	48.0	4.62	47.5	4.57	47.0	4.53	46.6	4.48
24	62.7	5.18	62.1	5.13	61.4	5.08	60.8	5.03	60.2	4.98	59.6	4.93

3 Capacity table

Duct S

AC160JNMDEH/AF + AC160JXMDGH/AF

Cooling

TC(Total Capacity), SHC(Sensible Heat Capacity), PI(Power Input)

Outdoor Temperature (°C, DB)	Indoor Temperature (°C, DB / WB)																							
	20 / 14			22 / 16			25 / 18			27 / 19			28 / 20			30 / 22			32 / 24					
	TC	SHC	PI	TC	SHC	PI	TC	SHC	PI	TC	SHC	PI	TC	SHC	PI	TC	SHC	PI	TC	SHC	PI			
	MBH	MBH	kW	MBH	MBH	kW	MBH	MBH	kW	MBH	MBH	kW	MBH	MBH	kW	MBH	MBH	kW	MBH	MBH	kW			
-5	47.7	38.2	3.39	48.9	39.1	3.47	50.1	40.1	3.55	51.3	41.0	3.64	52.1	41.7	3.70	52.5	42.0	3.73	53.8	43.0	3.82	55.5	44.4	3.91
21	49.2	39.4	4.80	50.4	40.3	4.91	51.7	41.3	5.04	52.9	42.3	5.16	53.8	43.0	5.24	54.2	43.4	5.28	55.5	44.4	5.41	56.6	45.3	5.56
35	50.2	40.2	5.64	51.4	41.2	5.78	52.7	42.2	5.92	54.0	43.2	6.07	54.9	43.9	6.17	55.3	44.2	6.22	56.6	45.3	6.36	57.7	46.2	6.51
46	39.7	31.7	6.49	40.6	32.5	6.65	41.6	33.3	6.81	42.7	34.1	6.98	43.3	34.7	7.09	43.7	35.0	7.15	44.7	35.8	7.32	45.8	36.6	7.49
48	36.2	28.9	6.21	37.0	29.6	6.36	38.0	30.4	6.52	38.9	31.1	6.68	39.5	31.6	6.78	39.8	31.9	6.84	40.8	32.6	7.00	41.9	33.4	7.17

Heating

TC : Total Capacity, PI: Power Input

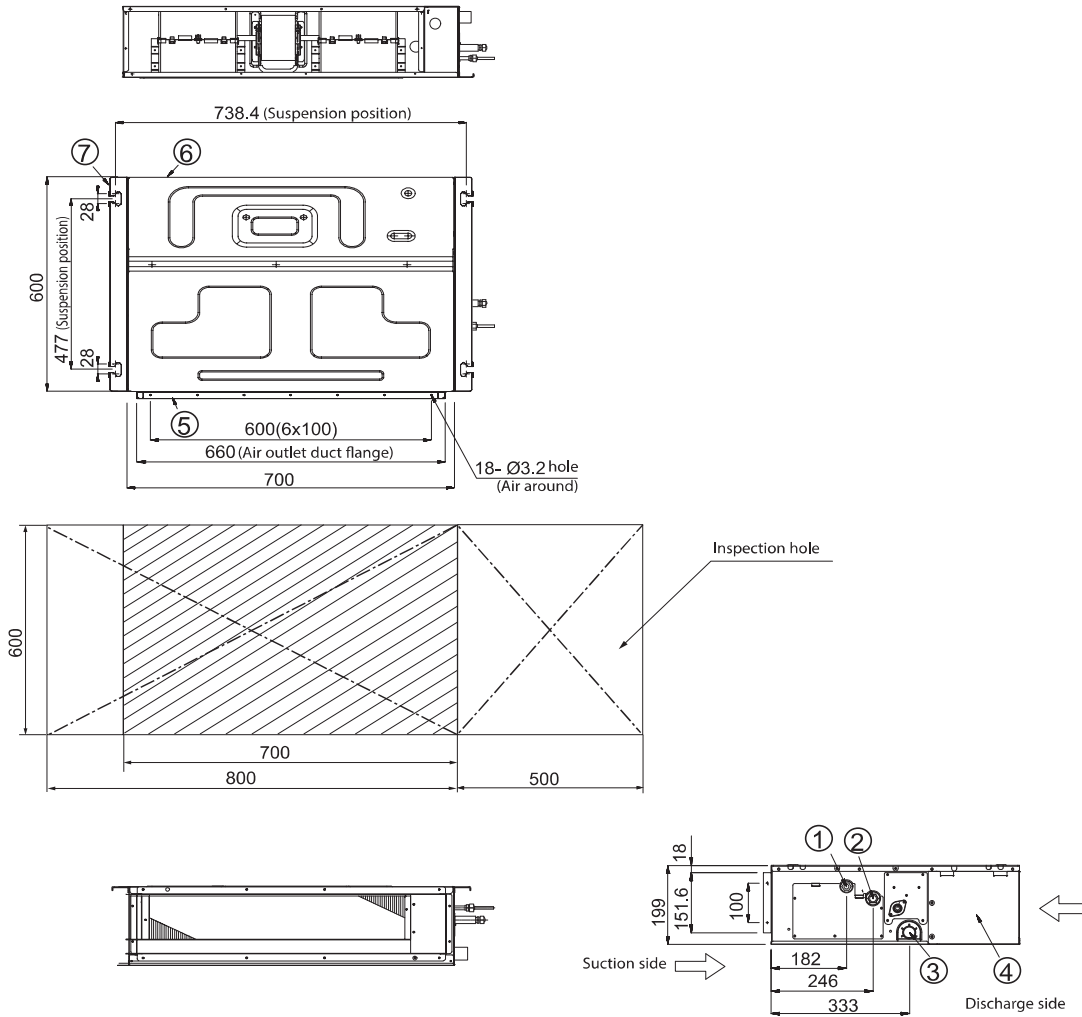
Outdoor Temperature (°C, DB)	Indoor Temperature (°C, DB)											
	16		18		20		21		22		24	
	TC	PI	TC	PI	TC	PI	TC	PI	TC	PI	TC	PI
	MBH	kW	MBH	kW	MBH	kW	MBH	kW	MBH	kW	MBH	kW
-15	45.7	7.00	45.3	6.93	44.8	6.86	44.4	6.79	43.9	6.73	43.5	6.66
-10	51.8	7.63	51.3	7.56	50.8	7.48	50.3	7.41	49.8	7.33	49.3	7.26
0	54.0	8.26	53.5	8.18	52.9	8.10	52.4	8.02	51.9	7.94	51.4	7.86
7	55.1	5.26	54.5	5.21	54.0	5.16	53.5	5.11	52.9	5.06	52.4	5.01
24	70.5	5.79	69.8	5.73	69.1	5.68	68.4	5.62	67.7	5.56	67.1	5.51

4 Dimensional drawing

Indoor : Duct S

AC035JNMDEH/AF

Unit:mm



No.	Name	Description
1	Liquid pipe connection	ø6.35(1/4")
2	Gas pipe connection	ø9.52(3/8")
3	Drain pipe connection	OD25 ID20(without drain pump)
4	Power supply connection	
5	Air discharge flange	
6	Air filter	
7	Hook	M8~M10

4 Dimensional drawing

Indoor : Duct S

AC052JNMDEH/AF, AC071JNMDEH/AF, AC090JNMDEH/AF

Units : mm / inches

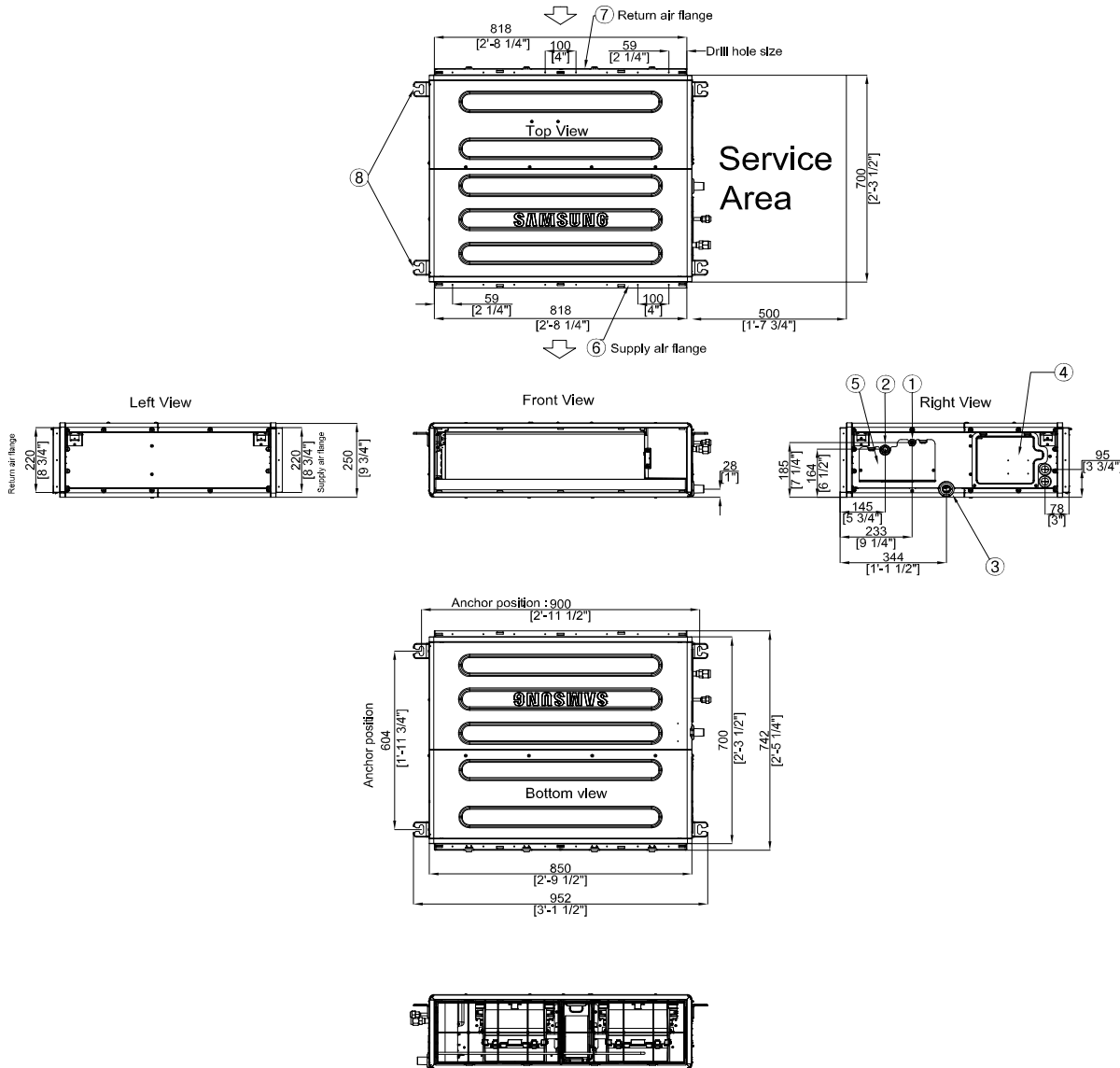


Table of descriptions

1	Refrigerant liquid pipe	7	Return air flange
2	Refrigerant gas pipe	8	Hook
3	Condensate drain	9	
4	Power & Comm. wiring conduits	10	
5	Refrigerant pipe conduits	11	
6	Supply air flange	12	

4 Dimensional drawing

Indoor : Duct S

AC100JNMDEH/AF, AC120JNMDEH/AF, AC140JNMDEH/AF

Units : mm / inches

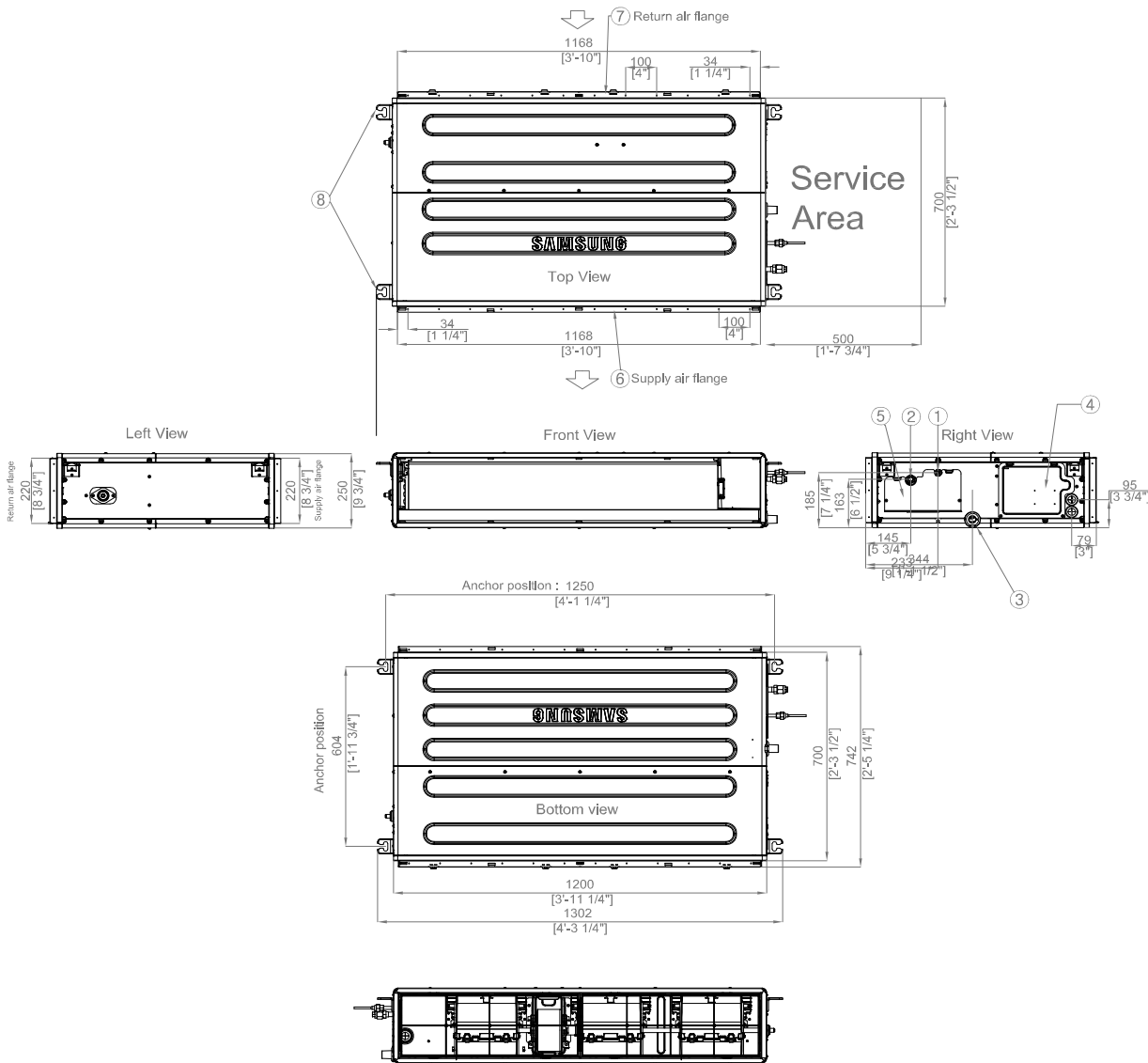


Table of descriptions

1	Refrigerant liquid pipe	7	Return air flange
2	Refrigerant gas pipe	8	Hook
3	Condensate drain	9	
4	Power & Comm. wiring conduits	10	
5	Refrigerant pipe conduits	11	
6	Supply air flange	12	

4 Dimensional drawing

Indoor : Duct S

AC160JNMDEH/AF

Units : mm / inches

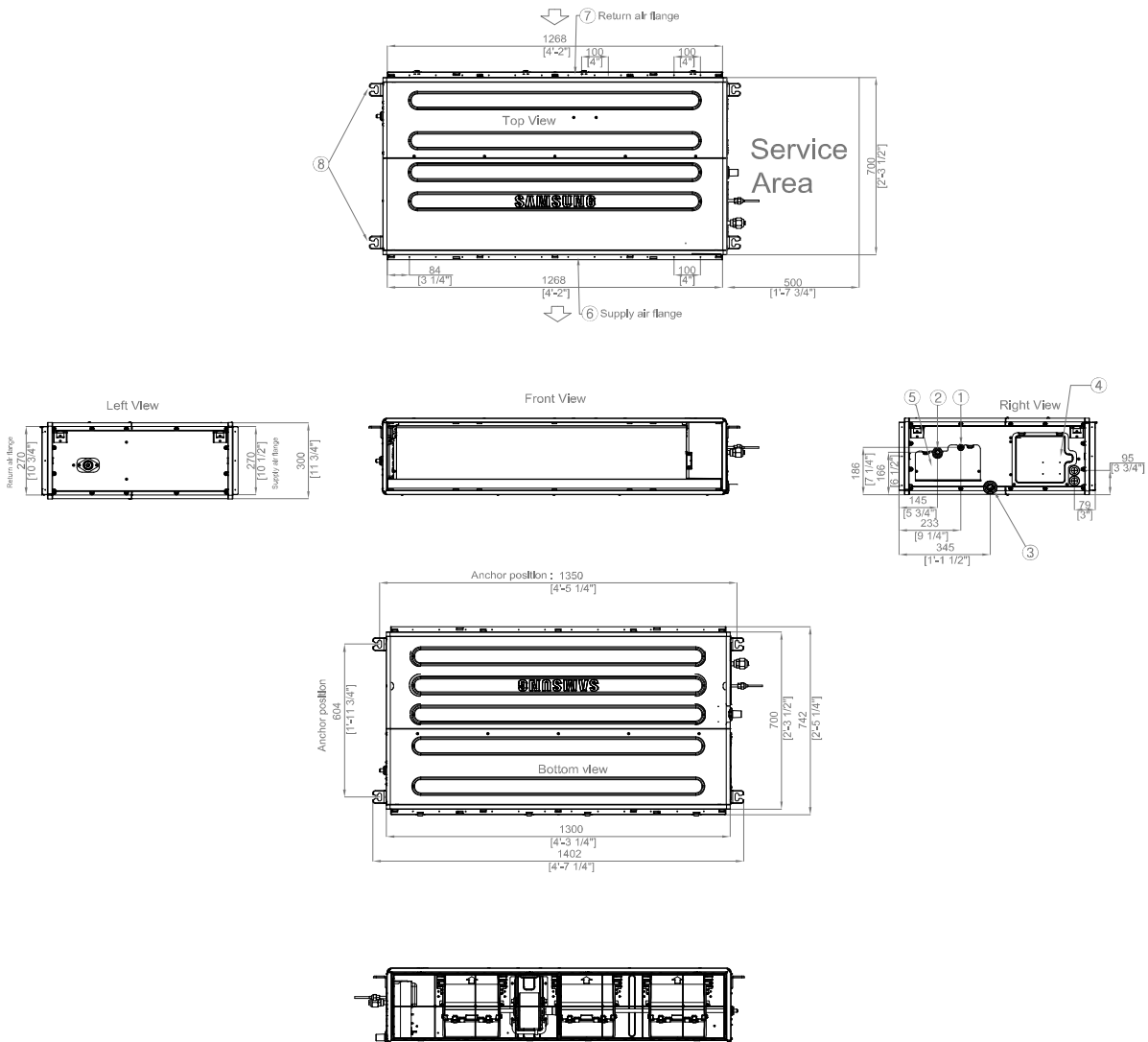


Table of descriptions

1	Refrigerant liquid pipe	7	Return air flange
2	Refrigerant gas pipe	8	Hook
3	Condensate drain	9	
4	Power & Comm. wiring conduits	10	
5	Refrigerant pipe conduits	11	
6	Supply air flange	12	

4 Dimensional drawing

Outdoor

AC035JXMDEH/AF

Units : mm / inches

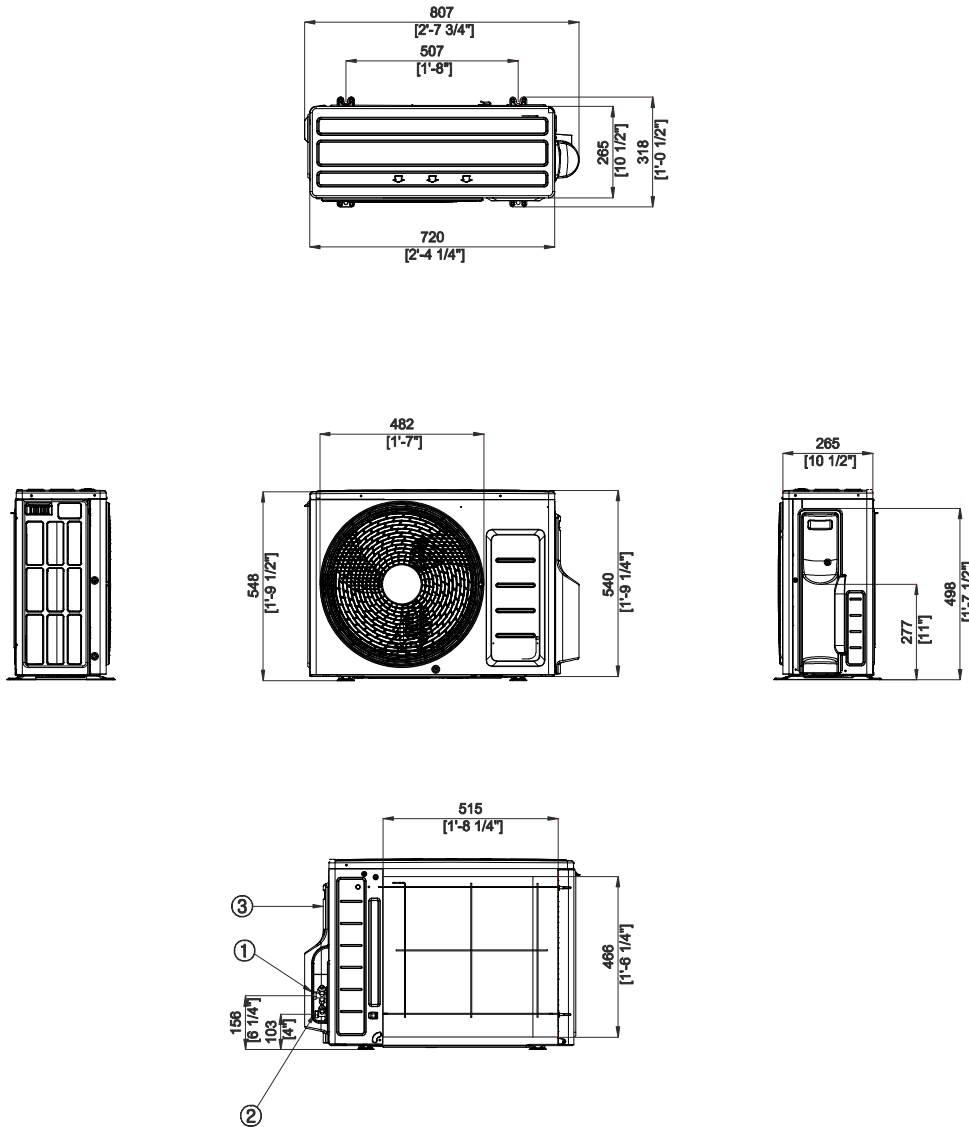


Table of descriptions

1	Refrigerant gas pipe	7	
2	Refrigerant liquid pipe	8	
3	Power & Comm. wiring conduits	9	
4		10	
5		11	
6		12	

4 Dimensional drawing

Outdoor

AC052JXMDEH/AF

Units : mm / inches

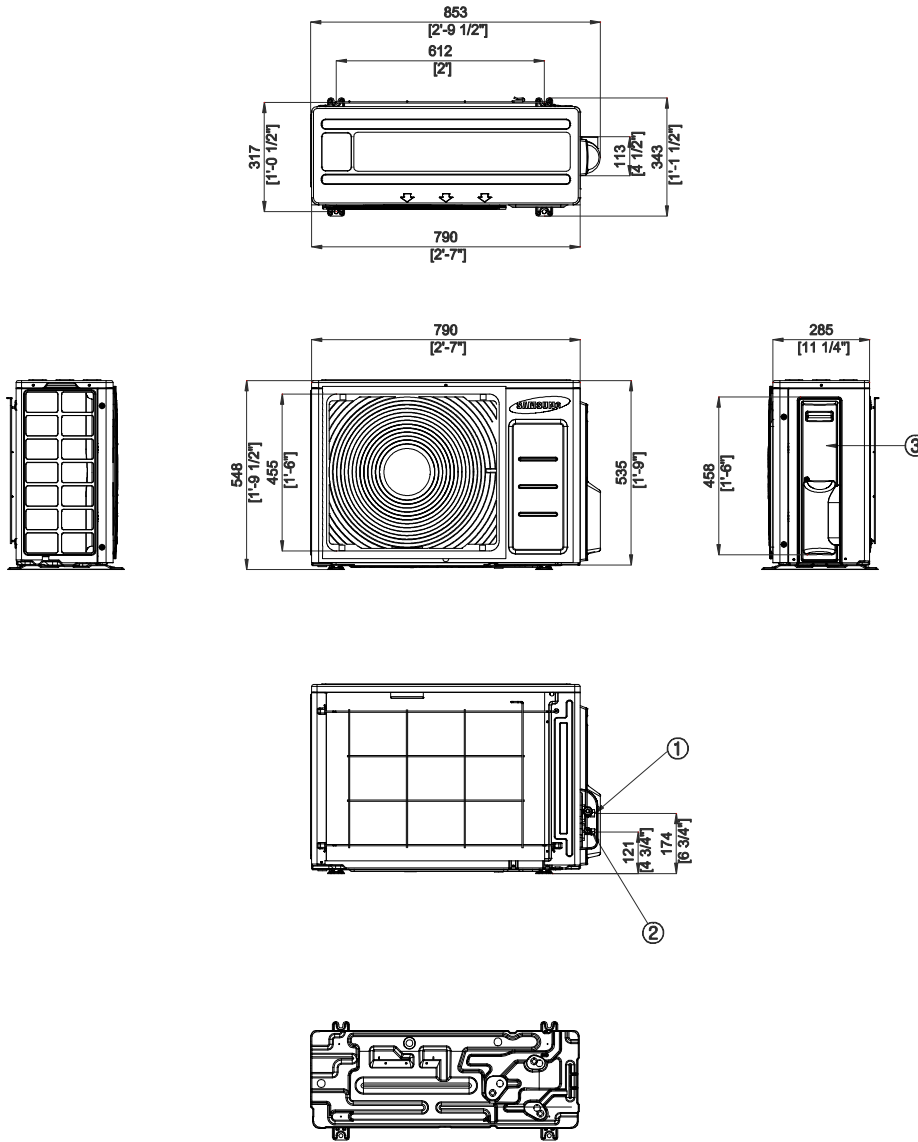


Table of descriptions

1	Refrigerant gas pipe	7	
2	Refrigerant liquid pipe	8	
3	Power & Comm. wiring conduits	9	
4		10	
5		11	
6		12	

4 Dimensional drawing

Outdoor

AC071JXMDEH/AF

Units : mm / inches

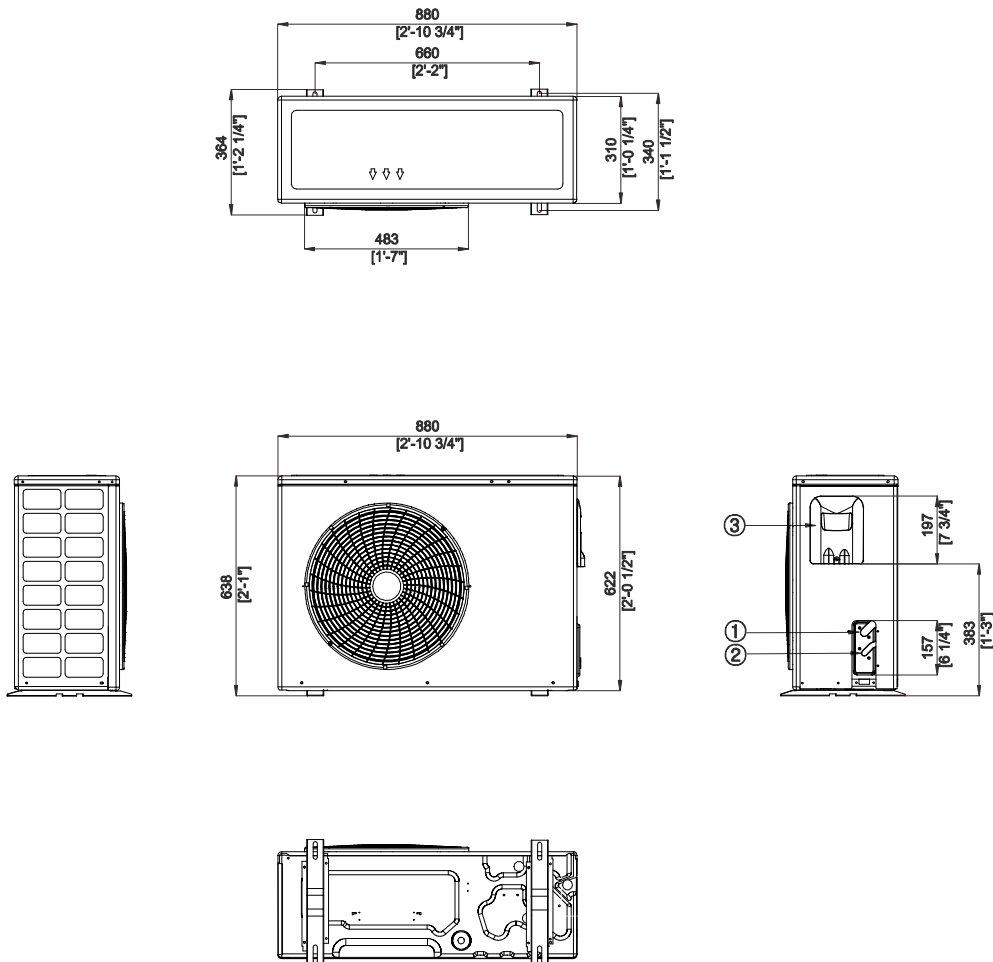


Table of descriptions

1	Refrigerant gas pipe	7	
2	Refrigerant liquid pipe	8	
3	Power & Comm. wiring conduits	9	
4		10	
5		11	
6		12	

4 Dimensional drawing

Outdoor

AC090JXMDEH/AF, AC100JXMDGH/AF, AC100JXMDEH/AF

Units : mm / inches

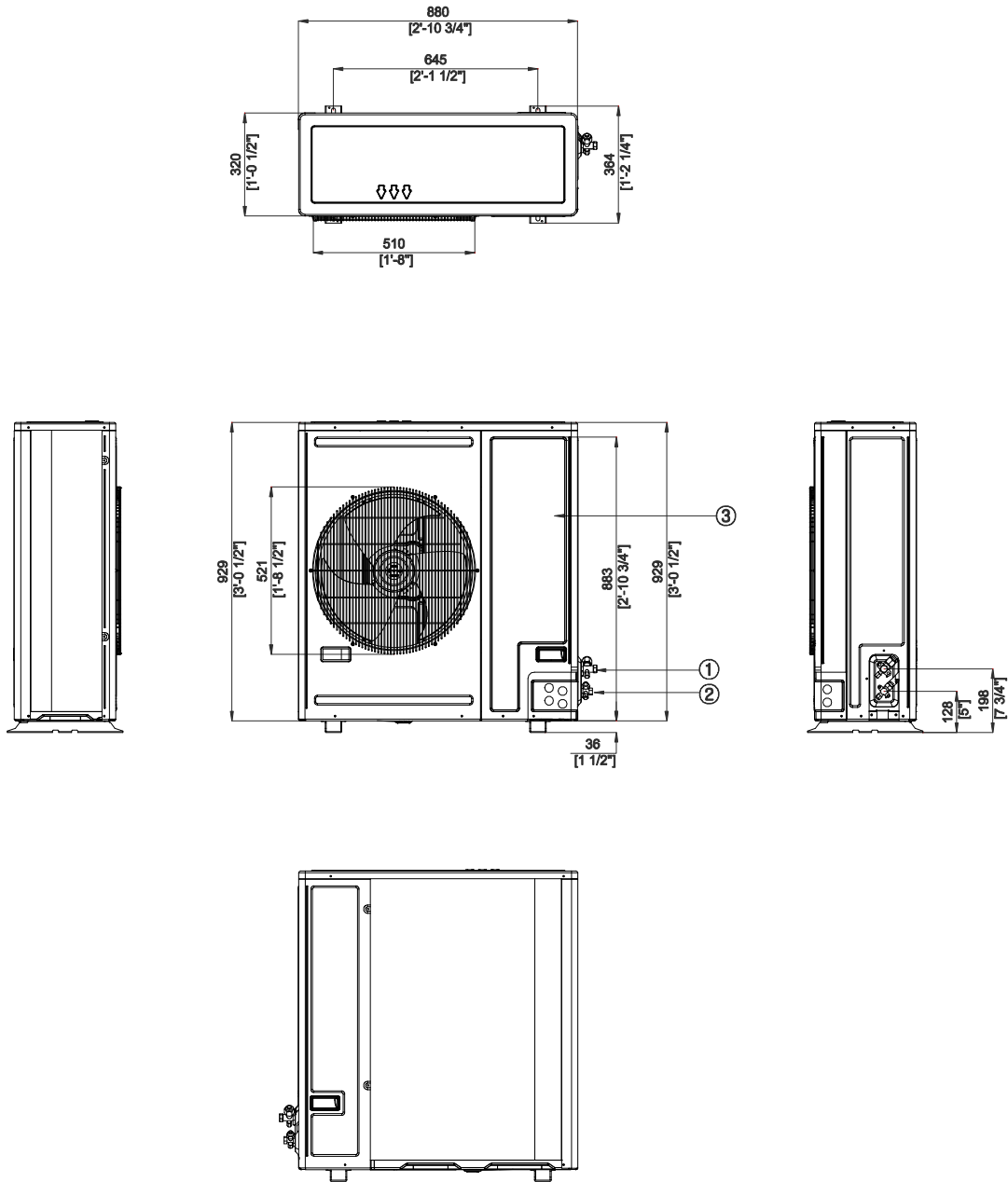


Table of descriptions

1	Refrigerant gas pipe	7	
2	Refrigerant liquid pipe	8	
3	Power & Comm. wiring conduits	9	
4		10	
5		11	
6		12	

4 Dimensional drawing

Outdoor

AC120JXMDGH/AF, AC140JXMDGH/AF, AC160JXMDGH/AF

Units : mm / inches

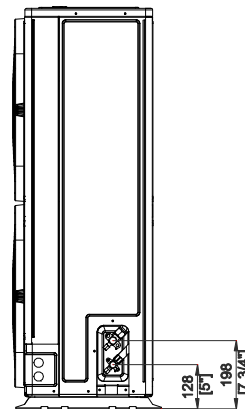
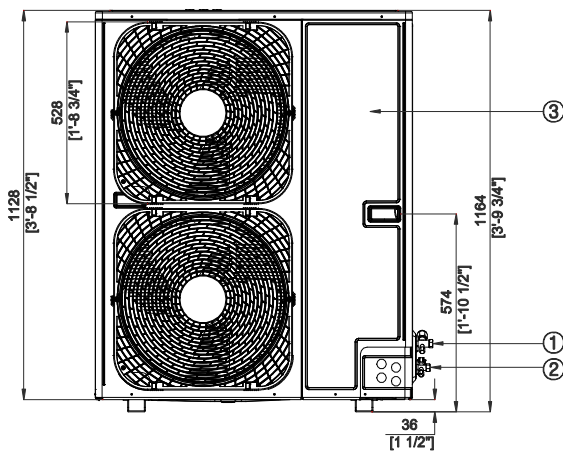
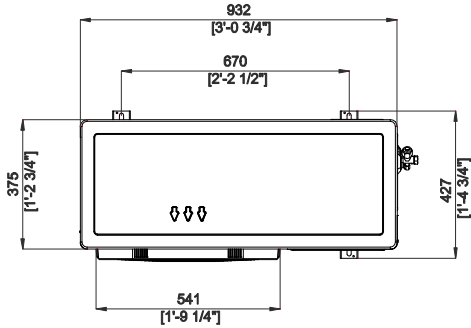


Table of descriptions

1	Refrigerant gas pipe	7	
2	Refrigerant liquid pipe	8	
3	Power & Comm. wiring conduits	9	
4		10	
5		11	
6		12	